

BEST IN RELIABILITY | BEST IN VALUE | BEST IN SERVICE

Mesa Solutions produces EPA-certified, industrial engines that are engineered to operate on natural gas or propane and can be used in stationary and mobile power generation applications.



Built on an industrial platform with a history of durability, the GV22PU integrates modern advancements for next-generation performance.



Designed for reliability, engineered for performance. Built on a robust industrial engine architecture, the GV22PU delivers proven power and efficiency for demanding applications.



A 90,000 square-foot engine facility, where engines are built to the Mesa Standard. Every engine is dyno tested to validate power prior to leaving our facility.

Engine Updates

The Mesa Solutions GV22PU engine features a heavy-duty industrial throttle to ensure durability and accurate performance over the life of the engine.

Base engine design refinements are focused on improving previous versions of the GV22 engine.

Designed with maintenance in mind, the placement of components is carefully selected to ensure easy access to commonly replaced parts, such as spark plugs.

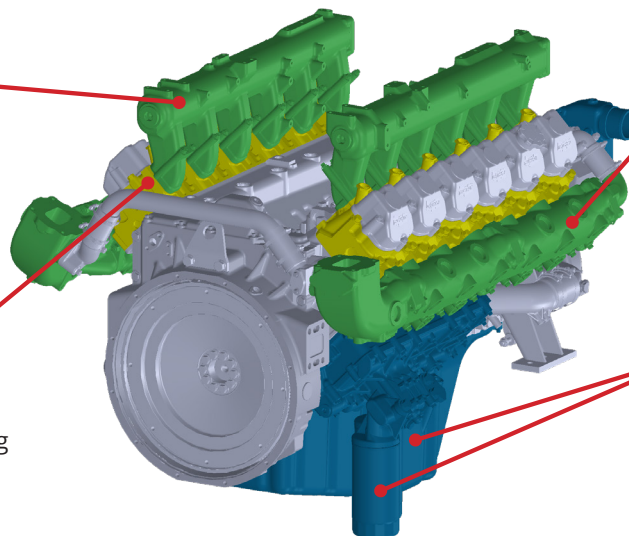
GV22PU Quality Improvements

Intake Manifold

Redesigned to improve the flow distribution to each cylinder and reduce combustion imbalance.

Cylinder Head

Engineered with improved cooling and higher strength, allowing for higher power density without sacrificing durability.



Exhaust Manifold

Redesigned exhaust manifold can withstand extreme temperatures and tough environments, allowing for thermal durability.

Oil Pan and Oil Filter

Larger oil pan capacity and reoriented oil filter creates streamlined maintenance for better convenience and performance.

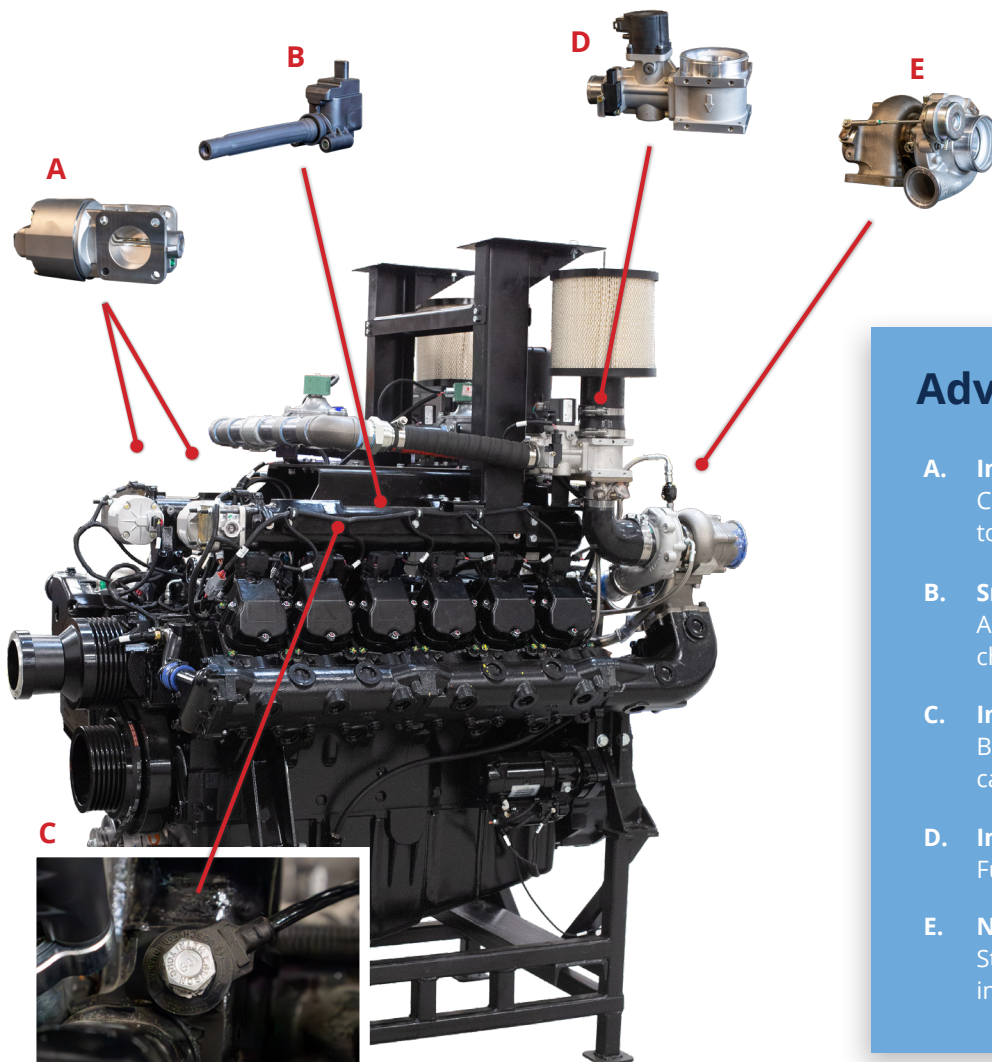
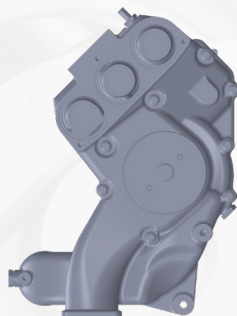
Piston Assembly

Features an improved ringpack design focused on reducing oil consumption and providing consistent sealing.



Water Pump Assembly

Enhanced water pump assembly creates optimized cooling performance.



Advantages of the GV22PU

- A. Improved Throttle**
Change from automotive grade throttle to industrial throttle.
- B. Smart Coils**
Adapts ignition timing to compensate for changes in fuel quality.
- C. Improved Knock Calibration**
Better sensor location (x4) and new calibration for better knock detection.
- D. Integrated Mixer**
Fuel metering and mixing in a single device.
- E. New Turbocharger**
Stainless steel turbine housing for improved durability.

Model	No. of Cyl	Disp (L)	GV22PU					
			60 Hz			50 Hz		
GV22PU	V12	21.9	COP Power	PRP Power	ESP Power	COP Power	PRP Power	ESP Power
NG Power Target (kWe*)			325	392	439	282	342	383
LP Power Target (kWe*)			261	317	355	231	282	316
NG Power Target (kWm)			387	460	510	341	406	450
LP Power Target (kWm)			319	379	420	287	341	378